

INVENTRONICS

EUC-030SxxxDTM

Rev. A

30W IP66

EUC-030SxxxDTM

30W IP66

90-305 Vac

THD 10%

	1			2			3
					120Vac	220Vac	

				100% 120Vac
				100% 220Vac
(I ² t)				220Vac 25 C 10%Ipk-10%Ipk = 32.8μs

				100%
				100%
				100%
			±	100%
			±	220Vac

Cree XLamp XP-G2 220Vac 25°C

				100% 25
				100% 25
				100% 25
				220Vac 25 80% (MIL-HDBK-217F)
				120Vac 80% 75°C ,
				5
(L × W × H) (L × W × H)	3.46 x 2.52 x 1.26 88 x 64 x 32			4.13 x 2.52 x 1.26 105 x 64 x 32

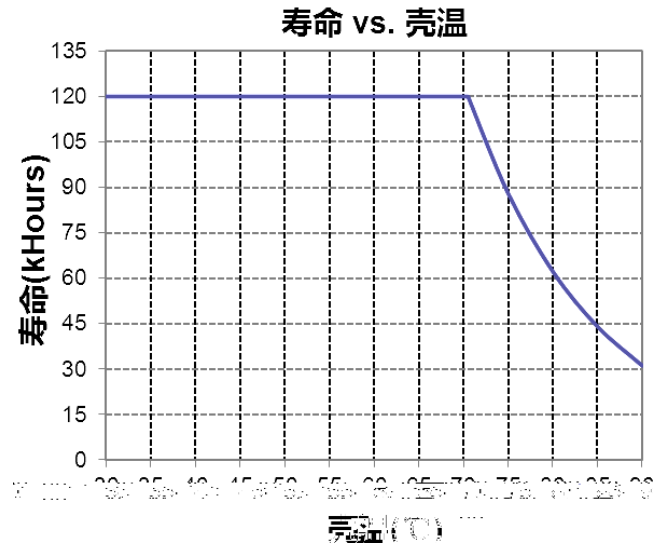
Cree XLamp XP-G2 25°C

0~10V				
0~10V	μ	μ	μ	

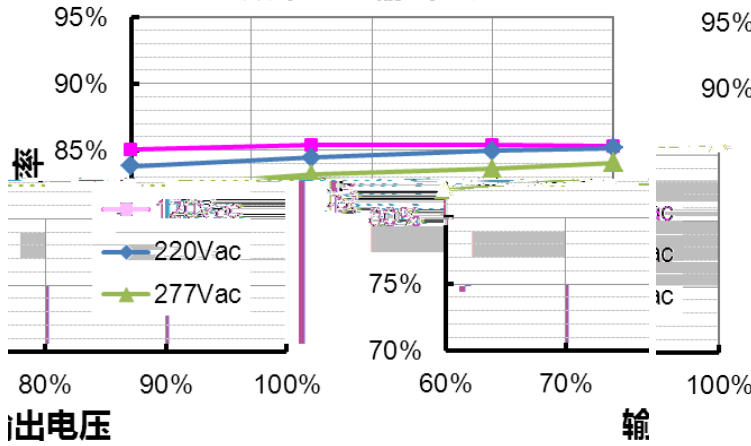
EMI	
EMS	

1 EMI

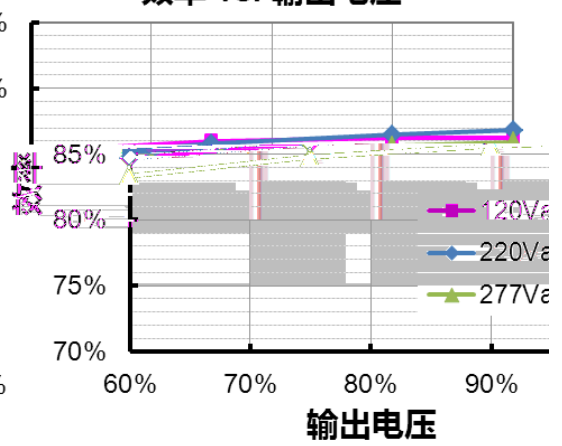
() EMI



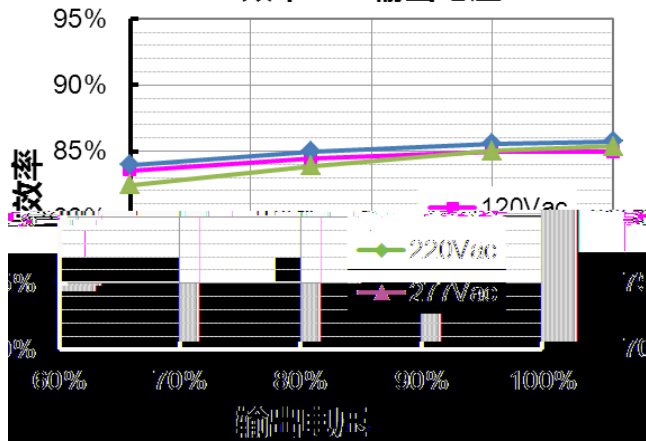
EUC-030S035DTM
效率 vs. 输出电压



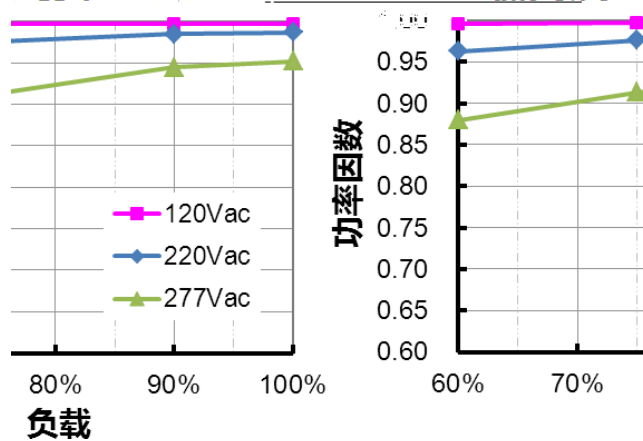
EUC-030S050DTM
效率 vs. 输出电压

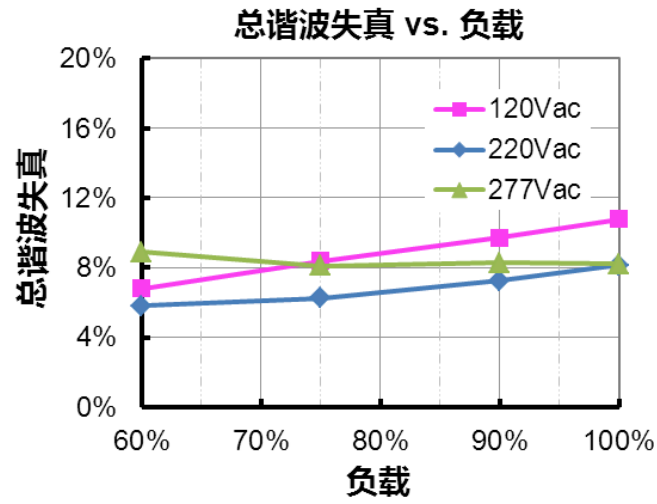


EUC-030S070DTM
效率 vs. 输出电压

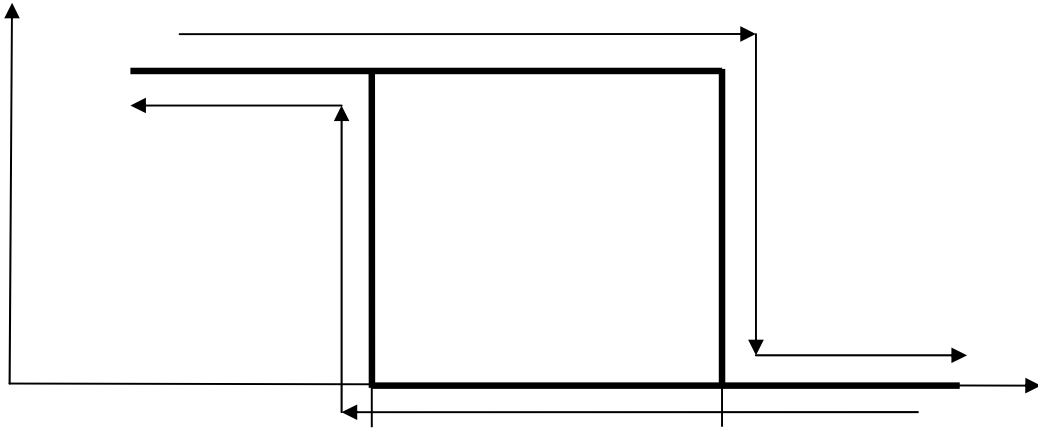


功率因数 vs. 负载

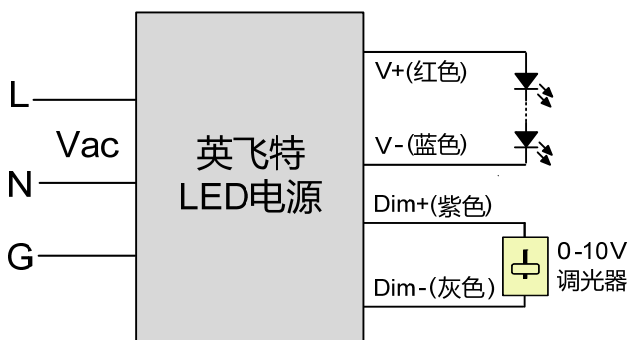




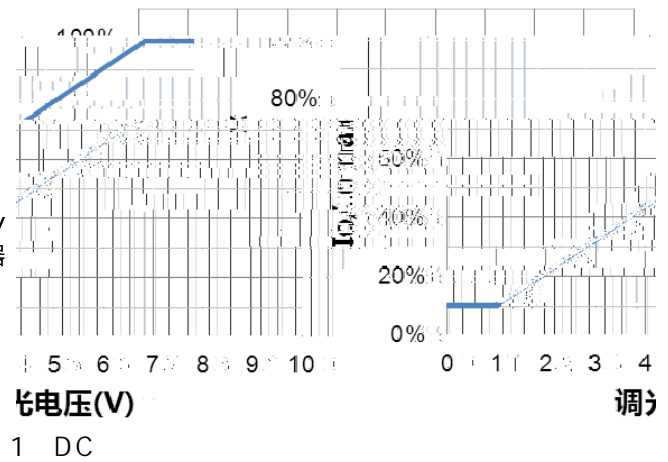
●



● 0-10V



Io/Iomax vs. 调光电压



1. 0-10V
2. Dim- V- V+
3. Dim+

INVENTRONICS

EUC-030SxxxDTM

Rev. A

30W IP66

INVENTRONICS

EUC-030SxxxDTM

Rev. A

30W IP66

			/	/